



HILLINGDON
LONDON



Residents' and Environmental Services Policy Overview Committee

Councillors on the Committee

Michael Markham (Chairman)
Shirley Harper-O'Neill (Vice-Chairman)
Janet Duncan (Labour Lead)
Judy Kelly
June Nelson
Susan O'Brien

Date: TUESDAY, 8 MARCH 2011

Time: 5.30 PM

Venue: COMMITTEE ROOM 6 -
CIVIC CENTRE, HIGH
STREET, UXBRIDGE UB8
1UW

**Meeting
Details:** Members of the Public and
Press are welcome to attend
this meeting

**This agenda and associated reports can
be made available in other languages, in
Braille, large print or on audio tape on
request. Please contact us for further
information.**

Published: Monday, 28 February 2011

Contact: Natasha Dogra

Tel: 01895 277 488

Fax: 01895 277 373

Email: ndogra@hillingdon.gov.uk

This Agenda is available online at:

<http://lbh-modgov:9071/ieListMeetings.aspx?CId=114&Year=2009>

Lloyd White

Head of Democratic Services

London Borough of Hillingdon,

3E/05, Civic Centre, High Street, Uxbridge, UB8 1UW

www.hillingdon.gov.uk



INVESTOR IN PEOPLE

Useful information

Bus routes 427, U1, U3, U4 and U7 all stop at the Civic Centre. Uxbridge underground station, with the Piccadilly and Metropolitan lines, is a short walk away. Limited parking is available at the Civic Centre. For details on availability and how to book a parking space, please contact Democratic Services

Please enter from the Council's main reception where you will be directed to the Committee Room. An Induction Loop System is available for use in the various meeting rooms. Please contact us for further information.

Please switch off any mobile telephones and BlackBerries™ before the meeting. Any recording of the meeting is not allowed, either using electronic, mobile or visual devices.

If there is a FIRE in the building the alarm will sound continuously. If there is a BOMB ALERT the alarm sounds intermittently. Please make your way to the nearest FIRE EXIT.



Residents' & Environmental Services Policy Overview Committee

Terms of Reference

To perform the policy overview role outlined below:

1. conduct reviews of policy, services or aspects of service which have either been referred by Cabinet, relate to the Cabinet Forward Plan, or have been chosen by the Committee according to the agreed criteria for selecting such reviews;
2. monitor the performance of the Council services within their remit (including the management of finances and risk);
3. comment on the proposed annual service and budget plans for the Council services within their remit before final approval by Cabinet and Council;
4. consider the Forward Plan and comment as appropriate to the decision-maker on Key Decisions which relate to services within their remit (before they are taken by the Cabinet);

In relation to the following services:

1. culture, arts and sport including the provision and/or management of museums, art galleries, theatres, archives and local history activities, libraries, leisure centres, swimming pools and other like facilities;
2. lifelong learning;
3. community safety;
4. the provision, planning and management of parks and open spaces, allotments, cemeteries, pitches and other like facilities;
5. transport, highways and parking;
6. waste management and recycling;
7. conservation and biodiversity;
8. safety education;
9. licensing and registration;
10. trading standards;
11. consumer protection;
12. environmental health functions
13. planning and building control
14. the Council's planning policies (including the Unitary Development Plan and other plans for the use and development of land), Local Agenda 21 Strategy and Local Transport (Implementation Plan).

Policy Overview Committees will not investigate individual complaints.

Agenda

- 1 Apologies for Absence
- 2 Declaration of Interest in matters coming before this meeting
- 3 To confirm that all items marked Part 1 will be considered in Public and that any items marked Part 2 will be considered in Private
- 4 To agree the Minutes of the meeting held on 15 February 2011 1 - 4
- 5 Consideration of The Hillingdon Khat Report 5 - 38
- 6 Review Topics Discussion for 2011/12 39 - 40
- 7 Forward Plan 41 - 50
- 8 Work Programme 2010 51 - 54

Minutes

**RESIDENTS' AND ENVIRONMENTAL SERVICES
POLICY OVERVIEW COMMITTEE**

15 February 2011



Meeting held at Committee Room 6 - Civic Centre,
High Street, Uxbridge UB8 1UW

	<p>Committee Members Present: Councillors Michael Markham (Chairman), Shirley Harper-O'Neil (Vice-Chairman), Janet Duncan (Labour Lead), Judy Kelly, June Nelson and Susan O'Brien.</p> <p>Witnesses Present: Cllr Richard Barnes David Brough.</p> <p>LBH Officers Present: Natasha Dogra</p> <p>Also Present: Press – Uxbridge Gazette</p>	
1.	<p>APOLOGIES FOR ABSENCE (<i>Agenda Item 1</i>)</p> <p>None.</p>	Action by
2.	<p>DECLARATION OF INTEREST IN MATTERS COMING BEFORE THIS MEETING (<i>Agenda Item 2</i>)</p> <p>None.</p>	Action by
3.	<p>TO CONFIRM THAT ALL ITEMS MARKED PART 1 WILL BE CONSIDERED IN PUBLIC AND THAT ANY ITEMS MARKED PART 2 WILL BE CONSIDERED IN PRIVATE (<i>Agenda Item 3</i>)</p> <p>It was confirmed that all items on the agenda were marked Part 1 and were therefore considered in public.</p>	Action by
4.	<p>TO AGREE THE MINUTES OF THE MEETING HELD ON 18 JANUARY 2011 (<i>Agenda Item 4</i>)</p> <p>The minutes of the meeting held on 18 January 2011 were agreed as an accurate record.</p>	Action by
5.	<p>REVIEW 1 - CONSIDERATION OF HILLINGDON'S KHAT CONSULTATION PAPER (<i>Agenda Item 5</i>)</p> <p>The Committee welcomed the witnesses Cllr Richard Barnes (Deputy Mayor of London) and David Brough (Chairman of Hayes Town Partnerships) to the meeting.</p>	Action by

Witnesses commended the Committee on undertaking a study into an area which may only affect a minority but had the potential to spread into mainstream society. Witnesses had contacted Scotland Yard regarding the issue of banning Khat and informed the Committee that neither Scotland Yard nor the Advisory Council on the Misuse of Drugs (ACMD) wanted Khat banned, as this would have had huge knock on effects of the substance being sold on the black market and one minority feeling targeted. Witnesses agreed that the Committee's alternative routes of targeting Khat use were commendable, including naming a regulatory body who would be responsible for the safe importation of Khat at Heathrow Airport and classifying Khat as a substance akin to tobacco.

Health effects of Khat were becoming more widespread, with mental health issues emerging but could not be wholly attributed to Khat. There was a significant correlation between the two and was disproportionately more noticeable in this minority group. The Committee discussed the health issues that were uncovered during the Health Witness Session, but recognised that Khat was not the only factor involved with the health issues.

Witnesses informed the Committee that the first generation of Somali people who had settled in the UK were the main Khat users, with some young Somali people chewing Khat along with illegal drugs or alcohol.

The Khat industry was valued at an estimated £460 million in the UK. The rivalry between gangs and dealers was becoming very dangerous due to the vast amount of profit involved with Khat. Witnesses said that some car parks in Hayes and Southall on Tuesday and Thursday nights were full of Khat users and dealers and the amount of money been passed between the two was substantial.

Witnesses informed the Committee that current services set up to help Khat users were insufficient and lacked the knowledge needed to deal with the problem. Services were less than adequate due to the lack of resources and funds available in this difficult economic climate. The Committee agreed that services needed to improve and the information available to these groups also needed to improve. Members agreed that an interagency approach must be taken, with services sharing best practice and knowledge. The Committee agreed that a London Borough wide group should be set up to enable services to share best practice when tackling Khat issues. Members agreed that the police would also benefit from the formation of such a group.

The Committee thought it would be beneficial for the local SNT to write a briefing paper on how to tackle Khat users and issues and present this to a Khat Working Group.

Agreed:

THAT THE LOCAL STRATEGIC PARTNERSHIP FOR LONDON BOROUGH, COMPRISING REPRESENTATIVES OF HILLINGDON COUNCIL AND COMMUNITY, HEALTH AND POLICE GROUPS MONITOR THE USE AND EFFECTS OF KHAT AND OPEN CHANNELS OF COMMUNICATION EXIST FOR THE SHARING OF

	INFORMATION.	
6.	FORWARD PLAN (<i>Agenda Item 6</i>) Noted: The Committee noted the Forward Plan.	Action by
7.	WORK PROGRAMME 2010 (<i>Agenda Item 7</i>) Noted: The Committee noted the Work Programme.	Action by
The meeting, which commenced at 5.30 pm, closed at 7.00 pm.		

These are the minutes of the above meeting. For more information on any of the resolutions please contact Nadia Williamsatasha Dogra on 01895 277 488. Circulation of these minutes is to Councillors, Officers, the Press and Members of the Public.

This page is intentionally left blank



HILLINGDON
LONDON

**RESIDENTS' AND ENVIRONMENTAL SERVICES
POLICY OVERVIEW COMMITTEE**

2010/2011

**What problems are posed to
Hillingdon, and beyond, by Khat
and what can we do to tackle
them?**

Members of the Committee

**Cllr Michael Markham (Chairman)
Cllr Shirley Harper-O'Neil (Vice-Chairman)
Cllr Janet Duncan (Labour Lead)
Cllr Judy Kelly
Cllr June Nelson
Cllr Susan O'Brien**



INVESTOR IN PEOPLE

CONTENTS

Chairman's Foreword.....

i. Background, Terms of Reference and Methodology.....

ii. Summary of Findings.....

iii. Conclusions and Recommendations.....

Chairman's Foreword

This Review by the Residents' and Environmental Policy Overview Committee into the effects of Khat on the residents of Hillingdon and beyond, has been one of the most extensive carried out and has generated much interest locally, regionally and nationally.

Khat is a plant grown in the Horn of Africa, the leaves of which are chewed for largely cultural and stimulant reasons. Historically, its use has been confined to people from that region, particularly Somalia. However, the use of Khat is beginning to enter mainstream society and we felt it was timely to take a close and informed look into its effects and what might be done to overcome them.

Over eighty individuals and organisations have been consulted in the preparation of this report, ranging from Government departments, the Mayor of London's office, other local authorities throughout the UK, organisations involved in the drug, policing, health and social sectors, Somali groups and Hillingdon community groups.

What is quite clear is that Khat is not just a Hillingdon problem. It is a national problem. There is little that can be done in Hillingdon in isolation. Action needs to be taken at Government level.

The recommendations in this report are wide ranging and extensive and will, we trust, be taken into account and acted upon by all involved.

The committee would like to thank all those who helped in this Review. Their comments and views have been most helpful. It would particularly like to thank Cllr. Richard Barnes AM, Deputy Mayor of London and David Brough, Chairman of the Hayes Town Partnership both of whom assisted us greatly and to Natasha Dogra from Hillingdon's Democratic Services department. Her enthusiasm and commitment added much to this Review.



Councillor Michael Markham
Chairman, Residents' and Environmental Services Policy Overview Committee

i. Background, Importance and Methodology

Aim of review

A review into the problems caused by Khat leading to recommendations to help Hillingdon deal with the problems associated with Khat.

Terms of Reference

1. To learn about the production of Khat: where it is grown, who grows it and how much it costs to produce it;
2. To examine the importation of Khat: how the UK Border Agency deal with Khat dealers at Heathrow Airport;
3. To analyse the distribution patterns in the borough: where is it sold and the cost;
4. To examine the usage of Khat: the profile of the average user, social effects, health side effects;
5. To investigate the link, if any, between Khat use and anti-social behaviour;
6. To analyse whether the use of Khat is spreading in the UK and what can be done to discourage this in the future: would it be possible to grow Khat in the UK and could this lead to expansion of use not only within communities renowned for consuming Khat now but more wide-spread usage;
7. To investigate how the London Borough of Hillingdon could work with external agencies to tackle the problem of Khat in the future;
8. To identify ways in which the London Borough of Hillingdon can raise awareness of the problem.
9. To report to Cabinet recommendations based upon comprehensive evidence.

Reasons for the review

Members believe it would be timely to discuss Khat, with the recent closure of "Khat Houses" in areas in the South of the borough. Khat is becoming a major problem within some communities and Members were aware of some women's associations located within the borough who were facing difficulties at home due to problems related to Khat usage.

Khat had been associated solely with the Somali community; however the recent spread of use to various communities has made the issue of Khat

very prominent. With the age range of users lowering in recent years the Committee believe this review must take place imminently. This will enable the London Borough of Hillingdon to thoroughly analyse the current situation and what can be done to tackle the problem while working together with external agencies and residents of Hillingdon.

The issues surrounding Khat have recently been highlighted in the media, with reports on the spreading of use to younger people and different ethnicities. The Committee will uncover the problems Khat poses to Hillingdon and how the problems can be dealt with before they spread further. For this reason, the Committee believe this review to well-timed and of great significance to the residents of the London Borough of Hillingdon.

There is a lack of knowledge about the services already available to Khat users, with Hillingdon PCT funding an outreach service for Khat users which has not been well publicised. The Committee believe these services should be brought to the attention of residents who are in need of support.

Methodology

The Committee took evidence from an array of people, groups and organisations (*see figure 1*) in the form of written responses, consultations, witness sessions and questionnaires.

(Figure 1)

Name	Organisation
James Brokenshire MP	Minister for Crime Prevention
Cllr Richard Barnes	Deputy Mayor of London
Michael Mandu	Kenyan High Commissioner
David Brough	Chairman, Hayes Town Partnership
Cllr Lynne Allen	Ward Councillor, Townfield
Dr Ellis Friedman	Joint Director of Public Health, LBH and NHS Hillingdon
Ivor John	Chair, Community & Police Consultative Group
Liam Kenny	Vice chair, Community & Police Consultative Group
Richard Reddie	Greater London Authority
Wayne Lawley	Advisor to Deputy Mayor of London
Viv Pullha	UKBA
Joanne Kingham	Outdoor Coordination Team, UKBA
Shabeg Nagra	Health Control Officer, Heathrow
Matthew Fowler	Home Office
Kathy Sparks	Community Safety Officer, Hillingdon
Steve Knight	Agricultural Specialist, United States Department of Agriculture
Jennifer Wilson	Agricultural Specialist, United States Department of Agriculture
Somaliland Press	Somaliland Press Newspaper
European Monitoring Centre for	European Monitoring Centre for

Drugs and Drug Addiction	Drugs and Drug Addiction
Mercola Douglas	Imported Food Office, Heathrow.
Thomas Lonnegren	European Medicines Agency
Mahamoud Ahmed	EACH, Brent
Trevor Begg	Chair, Hillingdon LINK
Graham Hawkes	Intermin Manager, Hillingdon LINK
Fatima Abdi	Sahan Centre
Anab Abdala	Sahan Centre
Mr M Amri	Hayes Islamic Centre
Roda Agab	EACH, Brent
Lakhir Randhawa	EACH, Harrow
Hassan Isse	Khat group, Hounslow
Kola Makoyawo	Hillingdon Action Group for Addiction Management
Rashid Jama	Horn of Africa Youth Association
Ijaz Khan	Hayes Islamic Centre
Mustafa Aden	Tageero
Jill Patel	Hillingdon MIND
Jill Downey	Drug and Alcohol Strategic Manager (PCT)
Mustafa Aden	Tageero
Kola Makoyowo	Hillingdon Action Group
Ali Saka	Hillingdon Action Group
Rawda Group	Hounslow
Saeed Abdi	Somali Mental Health Project
Carmel Clancy	Middlesex University
Inspector Mike Smith	Metropolitan Police Service
Ed Shaylor	Senior Community Safety Officer, Hillingdon
Sergeant Andy Shuker	Townfield Safer Neighbourhood Team
Townfield SNT team leaders	Townfield Safer Neighbourhood Team
Axel Klien	Lecturer in the Study of Addictive Behaviour, University of Kent,
E Warsame	Somali Organisations Network
Aabukar Awale	Community Engagement Officer anti-Khat campaign leader
Warsan Saalax	Chair, British Somali Association
Mark Prunty	Senior Medical Officer for Substance Misuse Policy
Richard Kramer	Turning Point
Ealing	Ealing Drug Alcohol Action team
Ealing	Local Authority
Brent	Local Authority
Harrow	Local Authority
Tower Hamlets	Local Authority
Tower Hamlets	Primary Care Trust

Islington	Local Authority
Hounslow	Local Authority
Sheffield	Local Authority
Leicester	Local Authority
Manchester	Local Authority
Cardiff	Local Authority
Hammersmith & Fulham	Local Authority
Bolton	Local Authority
Richmond	Local Authority
Surrey	Local Authority
Facebook	Questions were posed to over 30 'fans' of Khat on Facebook.
University Students	Brunel University
University Students	University of Granada, Spain
University Students	Midlands based Universities

THE HILLINGDON KHAT REPORT

2011

The story of Khat and the implications for the residents of Hillingdon and beyond

Contents

Part I: The international story - from the desert to the UK

Part II: The national story - Khat consumers

Part III: The national story - from Heathrow to the streets of Hillingdon

Part IV: The Hillingdon story / social issues caused by Khat

Part V: The Hillingdon story / health issues caused by Khat

Part VI: The Hillingdon story / crime and ASB issues

Part I: The international story - from the desert to the UK

1. For years the male elders of tribes in the Horn of Africa have spent their evenings out in the desert chewing the leaves of Khat, whilst talking over the day's events with their friends in convivial conversation. A cultural pastime that is still seen today.
2. Historically, Khat has been consumed because of its stimulant properties and its low production costs (Gebissa, 2010). To some, it is an inexpensive way to relieve the poor quality of life experienced in those areas. To others it is a matter of growing a leaf containing Cathine and Cathonine to sell on a global scale.
3. Historically Khat has been used to treat various ailments such as depression. The New Testament contains the earliest written record of the medical use of Khat (Cox, 2003).
4. Harvested throughout the year in a variety of climates and soils, the evergreen shrub is cultivated as a small bush or tree. Its aromatic seedless leaves have a slightly sweet taste. The plant is sown as a seed and can take up to five years to mature enough to be consumed. It thrives in the arid desert conditions of Ethiopia, Kenya, and the Yemen where over 100,000 hectares of land are used for its cultivation (Beckerleg, 2010). The plant is harvested in the early hours of the morning and by late morning it is sold in the market.
5. The Khat sector employs approximately 411,590 farmers and a further 120,00 who act as indirect traders (appendix B).
6. Khat is conventionally chewed, with only a small number of users consuming a drink made with dried Khat leaves. Khat leaves and stalks are chewed slowly to release the active ingredients of Khat which are swallowed with saliva. Leaves and stalks are chewed into a ball shape, which is characteristically stored in the user's cheek for a while.
7. Khat varies in strength from region to region. Kenyan Khat is considered to be the strongest and, thus, the most popular (Neil, 2007).
8. Once mature, the plants are cut by hand, made into bundles of some 250 grams in weight and wrapped in banana leaves to maintain freshness. Up to 40 bundles are then placed in cardboard boxes for transportation (RESPOC, 2010).
9. In addition to bundles, Khat can also be obtained via the internet as alcoholic drinks, some 40 per cent proof, as leaves for tea, as chewing gum, in seed form and as small plants (FreshGAT™, 2010).
10. The land used for its cultivation and sale is, it is believed, owned by a small number of companies with some of these companies thought to be officially

controlled, particularly in those areas currently seeing internal conflict (Beckerleg, 2010).

11. These organisations utilise highly sophisticated methods of cultivation, production and transportation of Khat to all parts of the world, mainly by air.
12. Today, large refrigerated lorries transport the bundles of Khat from the areas of production to such airports as Jomo Kenyatta International Airport in Nairobi and Moi International Airport in Mombassa for shipment to the UK.
13. Flights arrive daily from these airports to Heathrow, Gatwick, Manchester and Manston in Kent (RESPOC, 2010).
14. This well managed and controlled supply chain management system ensures that the Khat arrives with the consumer within three to five days of cultivation. This is of significant importance as Khat loses its potency the longer the time lapse between cutting and chewing (Books Llc, 2010). Three days is considered the maximum time of durability for chewing. However, it has become apparent that Khat can be frozen and still maintain a degree of potency.
15. It would seem to be a very big industry particularly in Kenya and subsequently, the Kenyan Embassy in London has been contacted by the Deputy Mayor of London's office to provide any information as to its value to the local economies and how many people are employed in production and distribution (appendix A)
16. The total annual imports of Khat into the UK come from Kenya, Ethiopia, Yemen and Somalia via Kenya. An annual total of around 1,95million kgs/1,917 tons. (RESPOC, 2010)
17. Each flight brings in over 36 tons of Khat a week equating to 7 tons per flight, there is one flight a day, five days a week. A total of 9,000 boxes or 1.8 million bundles each week being imported into the UK (RESPOC, 2010).
18. The demand for Khat has increased with the growth in the number of refugees and immigrants from the Horn of Africa who have moved to the UK.
19. The contribution made by Khat to the Kenyan industry amounts to Kshs. 1,520,378,300. This equates to £12,669,819.16 (appendix B).

Part II: The national story - Khat consumers

20. The main users of Khat come from Somalia, Kenya, Ethiopia and Yemen. The most recent recorded data that is from the 2005 ACMD report. The number of users is estimated at 400,000 adult men and women, and young people (ACMD, 2005).
21. It was reported that an estimated 34 per cent of men are users – 68,000, an estimated 20 per cent of women are users – 20,000 women. A total of 88,000 users or consumers in the UK. (ACMD, 2005).

22. Based upon the statistics contained the ACMD 2005 report, there are an estimated 50,000 users in London and approximately 10,000 users in Hillingdon.
23. It must be noted that these figures are 'best estimates' and can not be substantiated due to lack of up to date or available data, although we have been informed that they reflect figures held by the Home Office.
24. Based upon the total street value of Khat imported into the UK (£468 million), and with an estimated 88,000 consumers, the average expenditure on Khat is circa £5,300 per user (RESPOC, 2010).
25. Of the total number of users we have two clearly defined groups; occasional users and heavy users. Approximately eighty per cent are occasional users i.e. up to two bundles per week and one bundle at a time and spending around £10.00 to £15.00 a week (circa £780 per annum) on purchase (Buffin, 2008).
26. The balance can be defined as heavy users, consuming more than two or three bundles at a time, every day, at an estimated cost of well over £100.00 per week. In addition, heavy users tend to chew Khat whilst smoking cigarettes and/or cannabis, drinking alcohol and eating food. Therefore, a heavy user's expenditure is very high per week. The vast majority of heavy users are men aged between 20 and 40 years (Turning Point).
27. Occasional users normally chew Khat in their own homes but heavy users meet with other Khat users in various types of buildings – called Khat houses or Mafreshi (Patel, 2007). Some can be described as cafes, others are private homes. In Hillingdon, they are mainly around the Hayes town centre. Many heavy users spend most of their days and nights at Khat houses with their friends.
28. There is anecdotal evidence that Khat is beginning to be used outside of the Somali community and therefore the type of environment used for Khat consumption will vary.

Part III: The national story - from Heathrow to the streets of Hillingdon

29. There are three agencies responsible for checking cargo into the UK:
- UKBA handles security and VAT
 - Port Health Authority ensure that materials will not be of harm to consumers; and
 - DEFRA who ensure that plants are not imported that might have a damaging effect on indigenous flora and fauna.
30. Every container flown into UK airports is scanned for radio-active materials. Occasionally, the UKBA carry out spot check searches on individual containers to ensure that they contain what is put on the manifest. Last year Port Health at Heathrow carried out check on a shipment of Khat and found it to be unfit for

human use due to dangerously high levels of pesticides (Date, 2003). However, they had to release the shipment as they did not have the jurisdiction to confiscate the shipment.

31. None of the above agencies are responsible for Khat imports. This is due to lack of clarity as to its 'definition' and, therefore a lead authority cannot be identified.
32. Boxes of Khat are not checked by any agency and there are national security concerns that some of these boxes, particularly from Somalia, may contain other items, i.e. illegal drugs, other products, including, possibly, guns and explosives for use by terrorists in the UK and Europe.
33. There are also concerns relating to the smuggling of Khat from Heathrow into countries where it is illegal, particularly the USA. We understand that discussions are taking place between the UKBA and its US counterparts regarding steps that might be taken to prevent such activities.
34. Khat is banned in most countries, with the exception of the UK and the Netherlands due to two chemicals naturally found in the leaves - Cathonine and Cathine. These chemicals are considered to be constituents of Class C drugs. Although the report published by the UK's Advisory Committee on the Misuse of Drugs (ACMD) in 2005 disagreed and recommended to Government that Khat need not be banned as an offence is only committed if Cathonine and Cathine are isolated from the Khat plant (ACMD, 2005).
35. Once at Heathrow, Khat is taken to a storage area where agents arrive to collect the boxes of Khat. The agent pays the VAT due on each box which is usually paid in cash by the agent. The total amount of VAT collected on Khat imports is in the region of £3 million per annum (RESPOC, 2010).
36. Boxes of Khat are put on large lorries and taken out of the airport domain to various nearby locations usually car parks. It has been estimated that each lorry load contains 10 to 20 large boxes. No one knows who controls these lorries.
37. From this point the boxes are bought by 'retailers' from across the UK.
38. Each box contains up to 40 bundles and costs each retailer around £70.00. On average, it takes approximately 2 hours for each lorry load to be sold (RESPOC, 2010).
39. Each retailer purchases, on average, 3 boxes (120 bundles) – a cost of £210.00 or £1.75 per bundle. The boxes are put in cars or vans for onward transportation to other London boroughs and to other UK cities such as Bristol, Manchester, Sheffield and Birmingham (RESPOC, 2010).
40. The short sized Kenyan Khat is sold for £3 whilst the more potent Khat from Yemen (known as Hereeri) is sold for £7 per bundle. The bundles are then sold

to the consumer/user for an average of £5.00 per bundle. A profit of approximately £3.25 per bundle to the retailer. (EACH, 2011)

41. With each bundle being sold for an average of price £5.00, and with 1.8million bundles being imported each year, the UK street market value of Khat is thought to be around £9 million per week or £468 million per year.
42. Heathrow is also used as a channel to smuggle Khat into the USA. It is estimated that twenty per cent may be the amount illegally shipped to the USA each week (360,000 bundles or 900,000 kilograms). Based on a US street value of \$400 per kilo (ACMD, 2005), the US Khat market is worth some \$360 million per week. If this is the case, the amount of Khat used in the UK may, therefore, be reduced.
43. In Hillingdon, it is believed that there are off-licenses, cafes, restaurants and grocery stores selling Khat, mostly situated around a small area of Hayes in the south of the Borough (Uxbridge Gazette, 2010). These range from grocery type shops to cafes specially designed for Khat users known as Mafreshis.

Part IV: The Hillingdon story / Social issues caused by Khat

44. A culture-based and social activity, Khat chewing is thought to enhance social interaction. The plant is chewed at Yemeni and Somali social occasions to increase socialisation. Khat is also thought to be to a stimulant used to stay awake. We understand that nightshift workers use the plant to postpone fatigue and stay awake. There is also anecdotal evidence that students are experimenting with Khat in an attempt to boost mental performance prior to exams.
45. There are numerous social problems associated with the use of Khat, particularly caused by male heavy users.
46. These problems include a detrimental effect on family life – whereby the husband/father is unemployed, spending most days and nights and the majority of the family's income at Khat houses. He is not at home to assist his wife in family matters, including managing the children. We have also been advised of instances of domestic violence. A significant proportion of Somalis also appear to be living in privately rented accommodation, much of it in poor condition. All these issues may result in family breakdown.
47. In addition, there are such issues as the noise and nuisance coming from Khat houses during the day and night and groups of heavy Khat users chewing Khat and spitting out chewed leaves on the pavements and smoking, drinking and shouting outside of the premises (RESPOC, 2010). This type of behaviour is seen to be very intimidating, anti social and is creating community tensions within these areas.
48. However, it must be said that there is no evidence to substantiate that Khat is the sole cause of these social problems.

49. It could be argued that it is the joint consumption with other substances and alcohol, along with the frustration of being unemployed, family issues, being alienated from the main stream community due to poor English and lack of personal esteem that together contribute to these social problems.
50. Whilst it is accepted that some Somali women chew Khat, there is no evidence that they also use Khat houses or, indeed, cause family or social problems.
51. Young people in their twenties are giving most cause for concern as Khat is being used as a gateway to harder substances (Nabuzoka, 2005).
52. There are over forty groups in the UK established to assist Somali refugees, fifteen in Hillingdon, with a broad range of remits (Mental Health Alliance, 2009).
53. In addition, in Hillingdon agencies such as HAGAM and Tageero, EACH and the Somali Mental Health Project also provide help and guidance to Somali families (Mental Health Alliance, 2009).

Part V: The Hillingdon story / Health issues caused by Khat

54. The potential health risks of Khat are many and varied and, in most cases, are dependent upon the physical and psychological manner of each individual, whether they are occasional or heavy users.
55. It is recognised that there is unlikely to be much harm from chewing Khat on an occasional basis i.e. once or twice a week. Although this does depend on the individual's metabolism.
56. It is also recognised that Khat can be addictive to some users but this could be due to the individual's personality as the same can be said for other substances like alcohol, tobacco and drugs (Kebede, 2002).
57. The main health problems associated with the heavy use of Khat include increased heart rate, increased blood pressure, insomnia, constipation, lethargy, hyperactivity, loss of appetite, diminishing sex drive, depression, tooth darkening, euphoria and hallucinations, and mental health.
58. However, there is no clear evidence that Khat alone is causing these problems. It has become apparent in our investigations that heavy users consume a range of other substances and it may well be that these health problems are caused by a number of factors.
59. Indeed, the misuse of any one substance or a mixture of a number can be detrimental to health.
60. Heavy users who have become addicted to Khat are able to receive help through national bodies such as Drug and Alcohol Action Team (DAAT). In Hillingdon the local NHS Trust, HAGAM, Tageero, EACH and the Somali

Mental Health Project can also provide support and assistance to Khat users (Mental Health Alliance, 2009).

61. Unfortunately, co-ordination between agencies, in terms of helping Khat users, could be handled better, although we understand that it is intended to establish clearer channels of communication and to take a more positive multi-agency approach when dealing with heavy users of Khat.

Part VI: The Hillingdon story / Crime and anti social behaviour issues

62. Of concern to resident groups and the Police in Hayes, Hillingdon (where the majority of Khat users in the Borough live) are the effects of such anti social behaviour as the noise from Khat houses day and night, together with groups of heavy Khat users chewing, smoking, drinking, urinating, shouting and spitting out chewed leaves on the pavements outside of these buildings and in local streets (Uxbridge Gazette, 2010).
63. Usually anti social behaviour is not caused by Khat users in the Khat houses but by youngsters aged 14 to 20 who, so we have been told, congregate outside the Khat houses and use such areas as a base for meetings and for smoking cannabis and drinking alcohol (Bashford, 2003). It is important to recognise that although the using of other substances with Khat is a growing trend with youngsters, it is currently only within a minority.
64. To overcome such anti social behaviour, it is possible for local Safer Neighbourhood Police Teams to close down Khat houses by applying for Anti Social Behaviour Orders or a Closure of Premises Order under the Anti Social Behaviour Act.
65. It is believed that some Khat users are driving whilst still under its influence, although there is no evidence to confirm this, although a biochemical test is now commercially available to detect Khat constituents in urine (Cox, 2003).
66. Other than occasional anti social behaviour, no other criminal acts are considered to be undertaken by Khat users.
67. From a policing point of view, it is accepted that banning Khat will not stop its use but drive it underground and in the hands of criminal gangs – if such gangs are not already involved. Further, if it is made illegal the social circumstances that are already an issue may be exacerbated i.e. if the majority of the household income is already funding the use of Khat what are the possibilities of other activities taking place if there is no more money in the budget.
68. There is unanimous agreement that Khat requires a classification so that it can be regulated in some form, although there is no firm view as to what that classification might be at the moment.

iii. Conclusions and Recommendations

The Committee concludes:

The overuse of Khat, with its resultant social and health problems, is not unique to Hillingdon. It is a national issue, primarily in areas in which there are high numbers of people from or with links to, the Horn of Africa, particularly Somalia.

Whilst there are some measures that can be undertaken in the Borough, the solutions to these problems rely upon action at national level.

**RECOMENDATION 1
THAT THIS REPORT BE SENT TO THE MINISTER FOR CRIME PREVENTION AND TO THE MAYOR OF LONDON REQUESTING THAT CONSIDERATION BE GIVEN TO IMPLEMENTING THE NON-HILLINGDON SPECIFIC RECOMMENDATIONS MADE IN THIS REPORT**

Currently Khat is an unclassified substance, although its two constituents, Cathonine and Cathine are named as Class C drugs. The Advisory Council on the Misuse of Drugs recommended to Government in 2005 that Khat need not be banned, but that an offence is committed if Cathonine and Cathine are isolated from the Khat plant.

Government has banned all 'legal high' drugs for a year and we understand that consideration is being given to including Khat on the banned list. It is thought that a temporary scheme would allow involved agencies to interface and share their Khat issues, rather than try to tackle it on an individual basis, that a pilot scheme would allow the situation to be constantly monitored and that knowing that there was a set end date, may serve as a goal to ensure the scheme was a success. It is also thought that a short term ban on Khat may not give sufficient time to allow the substance to be sold on the black market, therefore not resulting in Khat going underground.

Whilst the option of banning in the short or long term may appear to be politically expedient, it could be argued that it will not help the situation now or in the future. There are problems. They cannot be ignored. They must be faced and action must be undertaken.

All the evidence we have as a result of this review makes it clear that banning Khat in the UK in the short or long term will not stop its use.

**RECOMMENDATION 2
THAT KHAT IS NOT BANNED BUT THAT IT CONTINUES TO BE AN OFFENCE TO ISOLATE CATHONINE AND CATHINE FROM THE PLANT**

Khat is currently unclassified. Thus, as we heard, no one agency is responsible for its import or use and as there are no enforceable laws

relating to Khat, due to its unclassified status, all consignments arriving at UK sea and air ports must be released, which may result in the public consuming a substance which is toxic. In addition, there are national security concerns relating to the possibility that the boxes labelled Khat contain other items.

Based on evidence received, we are of the view that Khat should be classified as a substance similar to chewing tobacco. However, at the moment Khat does not fit into any category of classification and may need its own classification. Classifying Khat will enable the enforcement of health warnings, age restrictions and testing for levels of chemicals in the bundles.

Classification will enable Port Health to ensure that imports arriving at air and sea ports do not contain dangerous levels of pesticide and for local Health and Safety officers to ensure that it is sold and consumed in environments that are as safe as possible.

Such a classification will also enable HM Revenue and Customs to assess any illegalities regarding unpaid VAT and other taxes.

**RECOMMENDATION 3
THAT KHAT BE CLASSIFIED AND THAT PORT HEALTH BE THE LEAD
AGENCY IN OVERSEEING ITS IMPORTATION**

Whilst grown on many countries, Kenya is the focal point. Most of the Khat consumed in the UK is grown there and it is from there that most of it is flown to this country.

Khat is at its most potent if consumed within three days of it being harvested. It is at its least potency after five days.

For bunches of Khat to be harvested and then consumed within just three days requires a highly sophisticated supply chain. This speed of production and distribution does not give time for normal food safety checks to be carried out. Indeed, as has been noted above, occasional checks by Port Health officers at Heathrow have shown that some Khat imported into the UK contains dangerously high levels of pesticides.

The Committee are of the view that the Kenyan authorities have a role to play in ensuring that the Khat consumed in the UK is as safe as it can be. However, we are aware of possible compliance issues.

**RECOMMENDATION 4
THAT THE KENYAN AUTHORITIES ARE ASKED TO CHECK THAT ALL
KHAT EXPORTED VIA ITS AIRPORTS DO NOT CONTAIN PESTICIDES**

Khat is not just consumed by chewing it in leaf form. We are aware that it can be purchased over the internet in liquid form as alcoholic drink, for tea and as chewing gum.

We understand from the UKBA that legislation exists that prohibits the sale and import of such products if the Cathonine and Cathine levels are at a particular level

RECOMMENDATION 5
THAT CHECKS ARE CARRIED OUT TO IDENTIFY THE LEVELS OF CATHONONE AND CATHINE IN SUCH PRODUCTS AND, IF AT DANGEROUS LEVELS, THAT SUCH IMPORTS BE BANNED AND THE IMPORTERS PROSECUTED.

The sale of Khat on the streets of Hillingdon, once it has left Heathrow, is carried out on unlicensed property with the result that food hygiene is unsupervised by local Food Safety and Hygiene officers

RECOMMENDATION 6
THAT THE SALE OF KHAT IN UNLICENCED PROPERTY IS PROHIBITED AND THAT THERE BE REGULAR CHECKING OF OUTLETS IN WHICH KHAT IS SOLD TO ENSURE IT IS AS SAFE AS POSSIBLE AND THAT KHAT HOUSES IN WHICH IT IS BEING CONSUMED, CONFORM TO RELEVANT HEALTH AND SAFETY REGULATIONS.

As the consumption of Khat grows within the wider population, it will be important for more to be done to inform potential users as to the dangers of overuse

RECOMMENDATION 7
THAT THERE BE A PRO-ACTIVE NATIONAL PUBLIC INFORMATION PROGRAMME THAT HIGHLIGHTS THE DANGERS OF OVERUSE OF KHAT, THAT GIVES SOURCES FOR HELP AND GUIDANCE ON SOCIAL AND HEALTH ISSUES AND THAT THIS CAMPAIGN BE LED BY GOVERNMENT WITH SUPPORT FROM REGIONAL AND LOCAL AUTHORITIES.

There does not appear to be widespread awareness within the health, police and education sectors as to the dangers of overuse of Khat

RECOMMENDATION 8
THAT A NATIONAL INFORMATION PROGRAMME BE INTRODUCED TARGETED AT GPs, A&E DEPARTMENTS, POLICE AND AMBULANCE SERVICES AND UNIVERSITIES AND COLLEGES TO HIGHLIGHT THE DANGERS OF THE OVERUSE OF KHAT AND SOURCES OF ASSISTANCE

In Hillingdon the mechanism that links agencies involved in providing services and support to those suffering the effects of overuse of Khat is the Local Strategic Partnership. By placing Khat on the agenda for every Local Strategic Partnership group meeting the channels of communication

between agencies will be opened and allow for an interagency approach to tackling Khat.

RECOMMENDATION 9

THAT THE LOCAL STRATEGIC PARTNERSHIP FOR LONDON BOROUGHs, COMPRISING REPRESENTATIVES OF HILLINGDON COUNCIL AND COMMUNITY, HEALTH AND POLICE GROUPS MONITOR THE USE AND EFFECTS OF KHAT AND OPEN CHANNELS OF COMMUNICATION EXIST FOR THE SHARING OF INFORMATION.

Anti-social behaviour by Khat users and those congregating around Khat houses, is of prime concern to residents

RECOMMENDATION 10

THAT THE COUNCIL AND THE POLICE TAKE A ZERO TOLERANCE APPROACH TO KHAT RELATED ANTI-SOCIAL BEHAVIOUR.

RECOMMENDATION 11

THAT AN UPDATE REPORT IS SENT TO CABINET IN 6 MONTHS TIME TO MONITOR THE PROGRESS MADE WITH TACKLING THE ISSUES POSED BY KHAT.

Legislative options available to tackle the issue of Khat.

Legislative Options considered and rejected	Description	Advantages	Disadvantages
<p>Option 1 Classification of Khat as a Class C drug</p>	<p>Currently Khat is an unclassified substance. Its two constituents, Cathonine and Cathine are Class C drugs. The Advisory Council on the Misuse of Drugs recommended to Government in 2005 that Khat need not be banned, but an offence is committed if Cathonine and Cathine are isolated from the Khat plant.</p>	<ul style="list-style-type: none"> • Legislation could be attached to a currently unclassified substance. • Policies would come into effect that would target the supply of Khat. • Penalties for possession, supplying and dealing would be enforceable by police. 	<ul style="list-style-type: none"> • May cause the drug to be sold on the black market • This action may be seen to target members of the Somali community • Loss of national revenue from tax paid on Khat
<p>Option 2 Classification of Khat as: i. a food stuff ii. an illegal food</p>	<p>As Khat is not classified as a food or a plant there is no one agency taking responsibility for it, resulting in some Khat consignments entering the UK covered with fertilizers and pesticides. As there are no enforceable laws relating to Khat, due to its unclassified status, all consignments must be released, which may result in public consuming a substance which is toxic.</p>	<ul style="list-style-type: none"> • An agency (FSA) would be responsible for Khat • Health and Hygiene regulations would be enforceable • The regulation of Khat consignments would ensure that those released do not contain toxic substances. 	<ul style="list-style-type: none"> • The activity of opening and testing each Khat consignment would be very time-consuming for UKBA. • It would rubberstamp and legitimize Khat as a food stuff and therefore fine for human consumption • Young people may be more tempted to try the 'new food'.
<p>Option 3 Ban Khat for a select period of time</p>	<p>As the Government has currently banned all legal highs for one year it may be an option to consider proposing the banning of Khat for a period of time to monitor the effects of banning the substance. An interagency approach</p>	<ul style="list-style-type: none"> • A temporary scheme would allow involved agencies to interface and share their Khat issues, rather than try to tackle it on an individual basis. 	<ul style="list-style-type: none"> • Somali people may feel targeted • It may be difficult to measure the success of this scheme as Khat users would not be buying/selling Khat openly

	would be needed to measure the success of this activity by monitoring the levels of crime, anti-social behaviour and the health issues relating to Khat during the time it is banned. Other highs would contain these chemicals have recently been made permanently illegal such as mephedrone. This move would require an awareness campaign to make the public aware of why Khat was made illegal.	<ul style="list-style-type: none"> • The pilot scheme would allow the situation to be constantly monitored and knowing that there was a set end date may serve as a goal to ensure the scheme was a success. • Banning Khat for a limited time may not be sufficient time to allow the substance to be sold on the black market, therefore not resulting in Khat going underground. 	<ul style="list-style-type: none"> • UKBA may not have the resources available to tackle this problem at Heathrow.
Option 4 Introducing local by-laws to ban Khat	Local Authorities now have the power to introduce by-laws to tackle problems in their local areas. As Hillingdon is home to Heathrow banning Khat locally may not only target Khat use in this borough, but also target the importation and distribution of Khat on a national scale and at Heathrow Airport.	<ul style="list-style-type: none"> • The ban would be enforced locally and not need national backing • The ban could be lifted by the LA if it was seen to be ineffective • Residents may value a move by their local Council to tackle a local problem. 	<ul style="list-style-type: none"> • May result in crime displacement, with other UK airports suffering a rise in Khat importation. • Hillingdon residents may continue to purchase Khat from outside of the borough • May result in out of borough public coming to Hillingdon to sell Khat to local users.
Option 5 Stick with status quo	Although Khat is a harmful substance that has been linked with health issues, users do not exercise high crime rates. There is a level of anti-social behaviour involved, but not on a large scale.	<ul style="list-style-type: none"> • No members of the Hillingdon community would feel targeted • Khat would not be driven underground • Crime displacement would not occur. 	<ul style="list-style-type: none"> • Hillingdon would be accepting Khat chewing as a conventional activity. • Health effects caused by Khat would be left unchallenged • The number of Khat users in the borough and beyond

Legislative Option chosen	Description	Advantages	Disadvantages
Classification of Khat as a substance akin to tobacco combined with help from Local Strategic Partnership groups and national public awareness campaigns.	As Khat is currently unclassified placing it into a category would allow for regulatory services to take responsibility of the substance.	<ul style="list-style-type: none"> • Enforceable laws relating to age restrictions, cleanliness and retailing outlets could be used to regulate Khat. • Levels of Cathine and Cathonine in imported Khat could be monitored. • The responsibility of Khat would be bestowed upon one authority • Minority groups would not feel targeted as Khat would not be banned. • The substance could not be sold to children and young people • Retail outlets and Khat houses would need to pass cleanliness laws • Khat would be subject to taxation levies • The stigma attached to Somali people using Khat would be lessened as the awareness of Khat would increase • Health campaigns would raise 	<p>could increase if the activity was not tackled.</p> <ul style="list-style-type: none"> • Costs of awareness campaigns • Costs of regulating the substance • Time cost at the Port of Entry

		<p>public awareness of Khat</p> <ul style="list-style-type: none">• Khat would stand as a monthly agenda item on the agenda of Local Strategic Partnership meetings to ensure the Khat issues were being tackled. This would allow for a more joined up approach from local groups.	
--	--	---	--

References

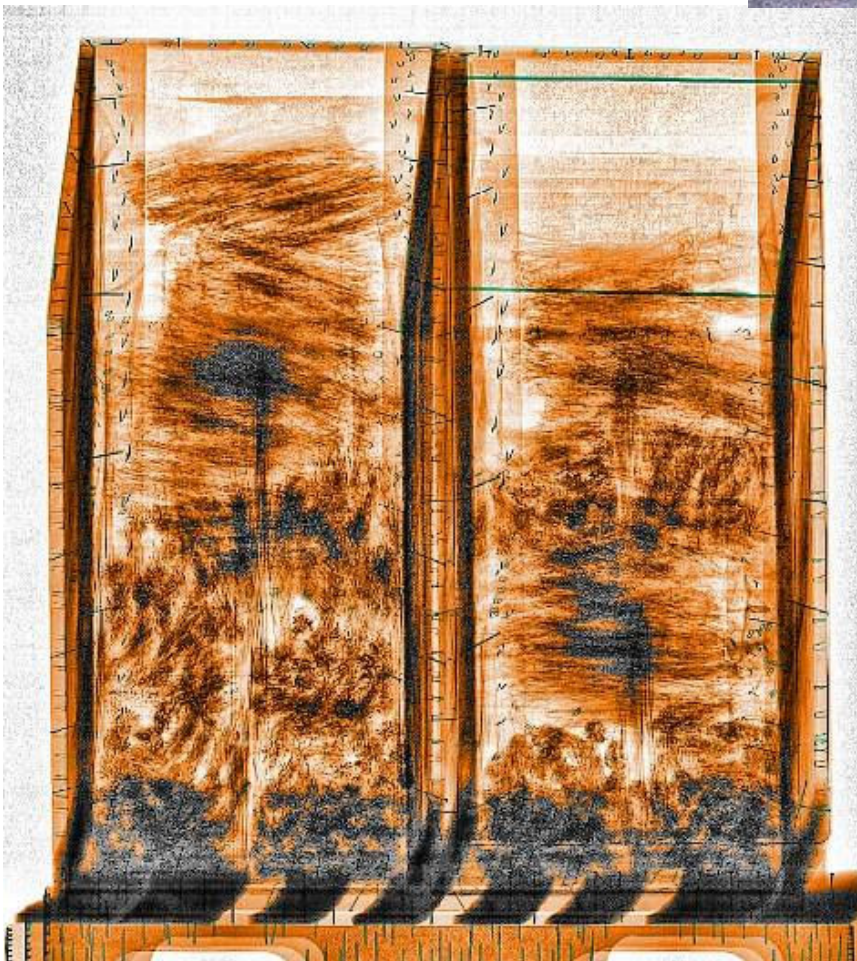
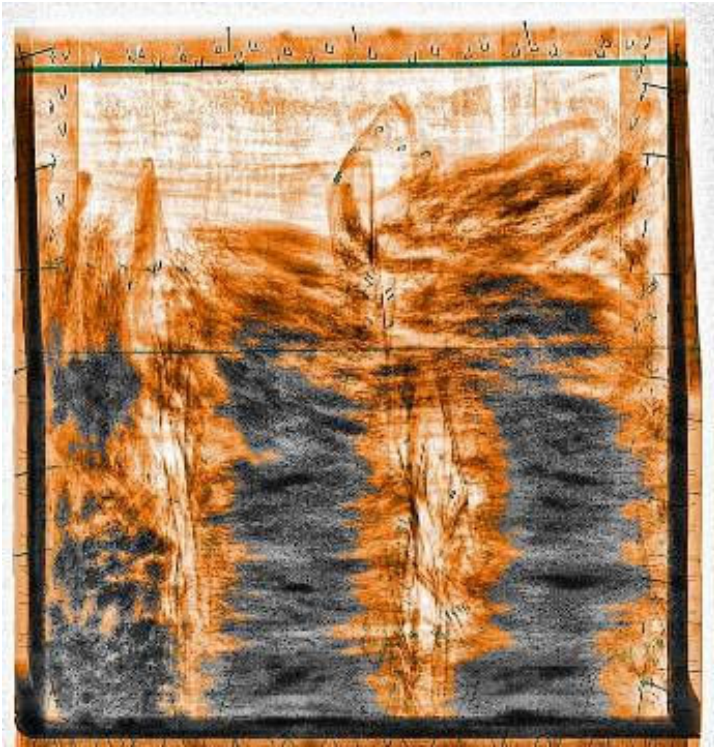
- Advisory Council on the Misuse of Drugs (ACMD), 2005, *Khat (Qat): Assessment of Risk to the Individual and Communities in the UK*. Available at: http://www.homeoffice.gov.uk/publications/drugs/acmd1/khat-report-2005/Khat_Report_.pdf?view=Binary. (Accessed 12 September 2010)
- Alem, A. & Shibre, T. (1997) *Khat induced psychosis and its medico-legal implication: a case report*. *Ethiopian Medical Journal*, 35, 137–141
- Anderson. D, Beckerleg. S, Hailu. D, Klein. A, *The Khat Controversy: Stimulating the Debate on Drugs*, Berg Publishers; illustrated edition, (1 April 2007).
- Bashford, J., Buffin, J., and Patel, K. *Drug misuse needs assessment project*. Report 2: The findings. 1-50. 1-5-2003. Centre for Ethnicity and Health. Ref Type: Report
- Belew M, Kebede D, Kassaye M, Enquoselassie F. *The magnitude of Khat use and its association with health, nutrition and socio-economic status*. *Ethiop Med J*. 2000;38:11-26.
- Books Llc, *Yemeni Culture: Khat, a New Day in Old Sana'a, Al-Akhdam, Culture of Yemen*, Unknown (29 May 2010)
- Burge, H., Shaheen, J. M., *et al* (1986) Khat: another drug of abuse?" *Journal of Psychoactive Drugs*, 18, 155–158.
- Buffin J., Yaser M and Mirza I (2008) Khat: current views from the community around the UK. Findings from community engagement forums. *National Drugs and Race Equality Coalition*.
- Cox. G & Rampes. H, *Adverse Affects of Khat: a review*. The Royal College of Psychiatrists. (2003)
- Date, J., Tanida, N. and Hobara, T. (2004) Khat chewing and pesticides: A study of adverse health effects in people of the mountainous areas of Yemen. *International Journal of Environmental Health Research*, 14(6), 405-414.
- Dhaifalah I, Santavy J. *Khat habit and its health effect. A natural amphetamine*, *Biomed Pap Med Fac University Palacky Olomouc Czech Repub*. 2004;148:11-15.
- EACH (2011), letter dated 16 February 2011.
- Elmi, A. S. (1983) *The chewing of Khat in Somalia*. *Journal of Ethnopharmacology*, 8, 163–176.

- FreshGAT™, 2011, *Chewers family World wide buy Qat/Khat*, available at : <http://www.freshgat.com/servlet/the-Fresh-KHAT/Categories>. (Accessed 10 November 2010)
- Gebissa. E, *Khat in Ethiopia*, Africa World Press, (11 March 2010)
- Goudie, A. J. (1987) Importing Khat, legal but dangerous (letter). *Lancet*, ii, 1340–134
- Giannini A.J., Castellani S. (1982) A manic-like psychosis due to Khat, *Journal of Toxicology* 19: 455-459.
- Gough S.P., Cookson I.B. (1984) Khat-induced schizophreniform psychosis in UK, *Lancet* 1: 455.
- Gough S.P., Cookson I.B. (1987) 'Khat-induced paranoid psychosis', *British Journal of Psychiatry* 150: 875-876.
- Griffiths P, Gossop M, Wickenden S, Dunworth J, Harris K, Lloyd C. (1997) A transcultural pattern of drug use: Qat (Khat) in the UK. *Br J Psychiatry*; 170:281-284.
- Halbach H. (1972) Medical aspects of the chewing of Khat leaves, *Bulletin of World Health Organization* 47: 21-29.
- Home Office, *Minister asks for Khat review*, 11 October 2010. Available at: <http://www.homeoffice.gov.uk/media-centre/news/Khat-review>. (Accessed 12 October 2010).
- Kalix, P. (1984) The pharmacology of Khat. *General Pharmacology*, 15, 179–187
- Kebede Y. *Cigarette smoking and Khat chewing among university instructors in Ethiopia*. *East Africa Med J*. 2002;79:274-278.
- Laurie Taylor and Axel Klein, *Thinking Allowed*, BBC radio 4, 13 December 2006
- Mental Health Alliance, *Associate Members*, 2009. Available at: <http://www.mentalhealthalliance.org.uk/aboutus/associatemembers.html>. (Accessed 29 September 2010)
- Nabuzoka, D. and Badhadhe, F. A. *Use and perceptions of Khat among young Somalis in a UK city*. *Addiction Research* 8 [1], 5-26. 2005. Ref Type: Generic
- Neil C. M. *Kenyan Khat: The Social Life of a Stimulant (African Social Studies Series)*, Brill; illustrated edition (28 Feb 2007)

- Omolo, O. E. & Dhadphale, M. (1987) Alcohol use among Khat (*Catha*) chewers in Kenya. *British Journal of Addiction*, 82, 97–99.
- Pantelis, C., Hindler, C. G. & Taylor, J. C. (1989) Use and abuse of Khat (*Catha edulis*): a review of the distribution, pharmacology, side effects and a description of psychosis attributed to Khat chewing. *Pharmacological Medicine*, 19, 657–668.
- Patel SL, Wright S, Gammampila A (2007). Brief paper: Khat use among Somalis in four English Cities. *Home Office*.
- Pam Rees, *Facts about Khat*, 2007. Available at: <http://www.phleicester.org.uk/Documents/trs/Facts%20About%20Khat.pdf>. (Accessed 14 June 2010)
- Residents' and Environmental Services Policy Overview Committees (RESPOC), 2010, *What problems are posed to Hillingdon, and beyond, by the legal high Khat and what can we do to tackle them: Importation and Distribution*. Available at <http://modgov.hillingdon.gov.uk/mgAi.aspx?ID=5261> (Accessed 23 September 2010)
- Residents' and Environmental Services Policy Overview Committees (RESPOC), 2010, *Social Effects of Khat*. Available at: <http://modgov.hillingdon.gov.uk/mgAi.aspx?ID=5495>, (Accessed 15 October 2010).
- Residents' and Environmental Services Policy Overview Committees (RESPOC), 2010, *Health Effects of Khat*. Available at: <http://modgov.hillingdon.gov.uk/mgAi.aspx?ID=5848>. (Accessed 20 November 2010)
- Residents' and Environmental Services Policy Overview Committees (RESPOC), 2010, *Crime Witness Session Minutes*. Available at: <http://modgov.hillingdon.gov.uk/mgAi.aspx?ID=6122>. (Accessed 9 December 2010).
- Saif A.R., Al-Qirbi A., Al-Geiry A., AlHabori, M (2003) Effect of Cath Edulis on plasma glucose and C-peptide in both type 2 diabetics and non-diabetics, *Journal of Ethno-pharmacology* 86(1): 45-49.
- S.Beckerleg, *Ethnic Identity and Development: Khat and Social Change in Africa*, Palgrave Macmillan (9 July 2010)
- Travis & R. Booth, *Drugs advisers will urge ban on 'legal high' linked to death of teenagers*, 17 March 2010. Available at: <http://www.guardian.co.uk/politics/2010/mar/17/ministers-urged-ban-mephedrone>. (Accessed 1 December 2010).

- Turning Point. *Khat use in Somali, Ethiopian and Yemeni communities in England: issues and solutions*. Home Office. In press.
- Uxbridge Gazette, 2010, Khat Houses are Shut Down. Available at: <http://hayes.uxbridgegazette.co.uk/2010/03/khat-houses-are-shut-down.html>. (Accessed 5 November 2010)
- Walter HP. *Drink-drive: broken jaw, lager and Khat ingestion*. *J Clin Forensic Med*. 1996;3:51-53.
- Yousef, G., Huq, Z. & Lambert, T. (1995) Khat chewing as a cause of psychosis. *British Journal of Hospital Medicine*, 54, 322–326.

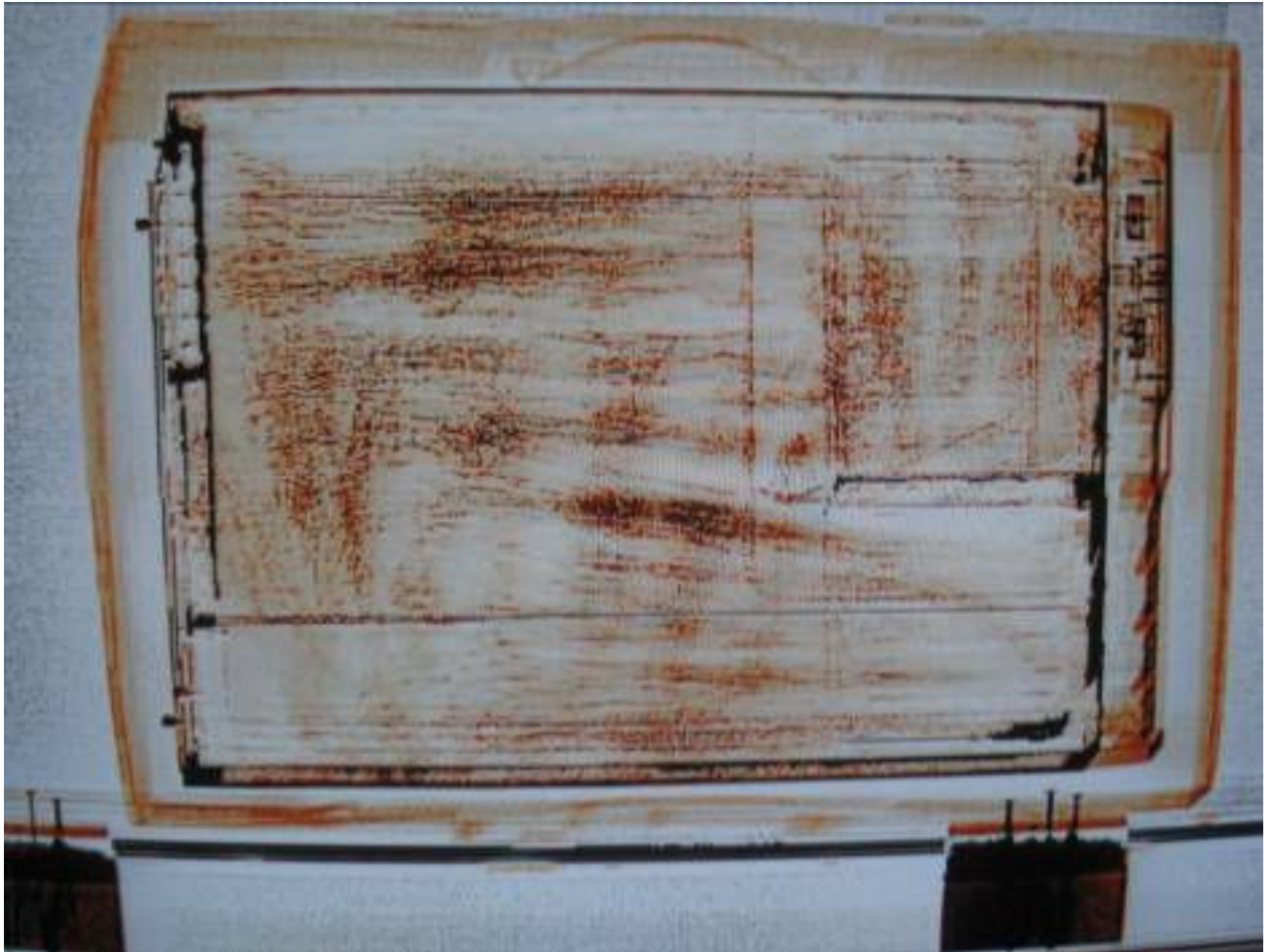
X-Ray images of Khat shipments



Outer crates often of heavy cardboard or plywood construction (sometimes wrapped in black plastic)

Inner cardboard boxes / cloth bags containing bundles of Khat





Outer cardboard box containing computer tower carcass with concealed bundles of Khat





Khat bundles hidden inside a gaming Chair



Typical x-ray image of Khat bundles with stalks clearly visible

This page is intentionally left blank

Telephone:020 7636 2371 ext 202
Fax:020 7323 6717
Email:kenyacommtrade_london@fsmail.net



Commercial Office
Kenya High Commission
45 Portland Place
London W1B 1AS

COM.54/02/050/(7)

17th February, 2011.

Cllr. Richard Barnes, AM, FRSA,
Deputy Mayor of London,
London Assembly Member for
Ealing and Hillingdon,
The Queen's Walk,
More London,
LONDON SE1 2AA

RECEIVED 21 FEB 2011

Dear Mr. Barnes,

RE: KHAT IN THE UNITED KINGDOM AND KENYA

I am writing in reference to your letter dated 21st December 2010 and my reply Ref. No. COM.54/02/050/3 dated 6th January 2011 on the subject Khat in the United Kingdom and Kenya.

Khat contributes KShs. 1,320,378,300 (slightly over shillings one billion, five hundred million) or GBP 12,669,819.16 (British Pounds Twelve million, six hundred sixty nine thousand). The importance of such an amount of money in Kenya cannot be over-emphasized.

The Khat sector directly employs 411,950 farmers and another 120,000 indirectly as traders. In total, it is a source of livelihood to over 500,000 people.

Yours sincerely,

A handwritten signature in black ink, appearing to read 'Michael Mandu', written over a circular stamp or mark.

Michael Mandu
For: HIGH COMMISSIONER

This page is intentionally left blank

RESPOC Review Topics 2011/12

**Contact Officer: Natasha Dogra
Telephone: 01895 277488**

REASON FOR ITEM

To enable the Committee to agree the review it wishes to undertake in the 2011/12 Council year.

OPTIONS OPEN TO THE COMMITTEE

1. Discuss preliminary topics ideas for in-depth review in 2011/12

INFORMATION

1. The Committee is responsible for undertaking the 'policy overview' role in relation to the services provided by the Environment and Consumer Protection Group and the Planning and Community Services Group. The full range of services under the Committee's remit is outlined in the terms of reference at the start of the agenda.

2. Previous experience from both Hillingdon and other Councils indicates that the Committee can have the greatest impact by focusing on a work programme agreed at the start of the Council year. Similarly, focusing upon one or two items at each meeting can help Members engage with the major issues and encourage stakeholder engagement.

3. As in previous years, the Committee is recommended to use this first meeting of the year to set a work programme for the next 12 months and select one or two topics for major review.

4. In selecting topics, Members are reminded of the Committee's work in from 2006 to 2010, which included reviews of:

2006/7

Tackling anti-social behaviour
Increasing recycling and reducing waste
A specialist domestic violence court for Hillingdon

2007/8

Highways maintenance
Community consultation and engagement
Cleanliness of the environment

2008/9

CCTV Strategy
Heritage in Hillingdon

2009/10

Street Lighting

Illegal Imported Cosmetics and Food

Planning Enforcement – construction and use of back buildings (homes in back gardens).

2010/11

Khat

Town Twinning

SUGGESTED SCRUTINY ACTIVITY

Members discuss preliminary topic ideas for in-depth review, using the selection criteria below suggested by the Audit Commission and their knowledge of residents' priorities.

Selection criteria recommended by the Audit Commission**(A) Possible Reasons for Scrutiny**

Strong public interest

Government pressure

Included in the council plan or Hillingdon Improvement Programme

Inspection report recommendation (e.g. performance below target)

(B) Scope for Making an Impact

Area within Council's control/influence

High impact on residents

Expertise available on which to draw

Good practice available elsewhere

FORWARD PLAN: 2010 – 2011

**Contact officer: Natasha Dogra
Telephone: 01895 277488**

REASON FOR ITEM

The Committee is required by its terms of reference to consider the Forward Plan and comment as appropriate to the decision-maker on key decisions which relate to services within its remit (before they are taken by Cabinet or Cabinet Member).

OPTIONS OPEN TO THE COMMITTEE

- To comment on items going to the Cabinet or Cabinet Members for decision.
- Or to note the items and decide not to comment.

INFORMATION

The Forward Plan

1. The Forward Plan for the following months has been published. Those items that are within this Committee's remit are shown on the attached version of the Forward Plan. The Committee may wish to consider these items and comment to the decision-maker.
2. Committee Members are requested to send in any questions they have on any items in the attached Forward Plan or in the published Cabinet agenda and reports, and to request any officers that they wish to be present to give advice.

SUGGESTED COMMITTEE ACTIVITY

- To consider whether there are comments or suggestions that the Committee wishes to make that will aid Cabinet's decision-making.

This page is intentionally left blank

The Cabinet Forward Plan

Ref	Report Title	Advance information	Ward(s)	Report to Full Council	Cabinet Member(s) Responsible	Officer Contact	Consultation	Background Documents	NEW ITEM
<small>ASCH&H = Adult Social Care, Health & Housing; DCEO = Deputy Chief Executive's Office; E&CS = Education & Children's Services; F&BS = Finance & Business Services; PECS = Planning, Environment & Community Services</small>									
CABINET - 17 MARCH 2011									
558	New Years Green Lane Civic Amenity Site	Cabinet will receive an update on the site redevelopment and be asked to take any relevant or related decisions.	Harefield		Cllr Jonathan Bianco	PECS - Bill Ogden	Corporate Teams		NEW
569	Low Cost Home Ownership - Contract Award for New Build in Hillingdon	In January 2011 Cabinet agreed to accept the £725,000 grant from the Homes and Communities Agency to build 29 units of new low cost housing for purchase by Hillingdon residents. Cabinet also approved that officers conduct a tender in order to identify the most appropriate developer and specialist advisers to deliver the homes. This report now seeks Cabinet approval to award contracts to a Contractor, Employers Agent and CDM Co-ordinator (to advise on health and safety). The Council will then be able to be in contract by 1st April 2011 in order to ensure that the allocation of grant can be retained. These new build homes will be developed on garage and small infill sites originally approved by Cabinet in March 2008. The delivery of the 29 new homes is Phase 2 of the Council's Housing Revenue Account Pipeline Scheme.	Northwood Hills, Botwell, Uxbridge North, Pinkwell, Townfield, Brunel, South Ruislip		Cllr Philip Corthorne and Cllr Scott Seaman-Digby	ASCH&H - Paul Feven	Corporate Teams		NEW

Ref	Report Title	Advance information	Ward(s)	Report to Full Council	Cabinet Member(s) Responsible	Officer Contact	Consultation	Background Documents	NEW ITEM
ASCH&H = Adult Social Care, Health & Housing; DCEO = Deputy Chief Executive's Office; E&CS = Education & Children's Services; F&BS = Finance & Business Services; PECS = Planning, Environment & Community Services									
570	West London Framework Agreement for Temporary Accommodation Procurement and Management	The report seeks the Cabinet's authority for the council to take part in a joint procurement scheme with other West London local authorities to develop a framework agreement with providers for the supply of Temporary Accommodation for homeless people which can be used to prevent homelessness as well as discharging the Council's duty to house. The scheme is referred to as Private Managed Accommodation and will involve a framework of providers procuring and managing accommodation directly from the private sector. The scheme will therefore increase the supply of properties to help meet the council's demand for temporary accommodation.			Cllr Philip Corthorne and Cllr Scott Seaman-Digby	ASCH&H - Paul Feven	Corporate Teams		NEW
530 Page 44	Amendments to Regulation of Street Trading	Cabinet will be asked to consider the consultation responses and final approval of additions and amendments to Street Trading Terms & Conditions (Regulations) under London Local Authorities Act to accommodate streamlining of the application process for community events and delegation of authority.	Town Centre Wards		Cllr Jonathan Bianco	PECS - David Frost / Bill Hickson			Moved from Jan 2011 Cabinet
541	Water Quality Services	To accept a tender for the provision of Water Quality Services for the monitoring of water supplies across all Council buildings.	All		Cllr Jonathan Bianco & Cllr Seaman-Digby	PECS - Geoff Eldridge			

Ref	Report Title	Advance information	Ward(s)	Report to Full Council	Cabinet Member(s) Responsible	Officer Contact	Consultation	Background Documents	NEW ITEM
ASCH&H = Adult Social Care, Health & Housing; DCEO = Deputy Chief Executive's Office; E&CS = Education & Children's Services; F&BS = Finance & Business Services; PECS = Planning, Environment & Community Services									
503b	Gatehill Farm Estate Conservation Area Status	As part of the ongoing programme of review of the Borough's Conservation Areas, Gatehill Farm Estate Area of Special Local Character (ASLC) has been reconsidered. It is felt that the area is eligible for designation as a conservation area. Following the public consultation, the report informs the Cabinet of the outcome of the consultations and seeks approval for upgrading Gathill Farm Estate Area of Special Local Character as Conservation Area.	Northwood Hills		Cllr Keith Burrows	PECS - Nairita Chakraborty	Ward Councillors, local residents, owners and other interested groups within the proposed area	Various	
SI	Quarterly Planning Obligations Monitoring report - Quarter 3	Regular monitoring report with information about spending on section 106 (developer contribution) monies.	All		Cllr Keith Burrows	PECS - Jales Tippell / Vanessa Scott		Previous Cabinet Reports	
SI	Reports from Policy Overview Committees	Major Policy Review recommendations for consideration by the Cabinet as and when completed.	TBC		as appropriate	DCEO - Democratic Services			
SI	Monthly Council Budget - monitoring report	The Cabinet receives a monthly report setting out in detail the council's revenue and capital position.	All		Cllr Jonathan Bianco	F&BS - Paul Whaymand			
CABINET MEMBER DECISIONS - MARCH 2011									
SI	Standard Items taken each month by the Cabinet Member	Cabinet Members make a number of decisions each month on standard items - details of these standard items are listed at the end of the Forward Plan.	Various		All	DCEO - Democratic Services	Various	Various	
CABINET - 14 APRIL 2011									

Ref	Report Title	Advance information	Ward(s)	Report to Full Council	Cabinet Member(s) Responsible	Officer Contact	Consultation	Background Documents	NEW ITEM
ASCH&H = Adult Social Care, Health & Housing; DCEO = Deputy Chief Executive's Office; E&CS = Education & Children's Services; F&BS = Finance & Business Services; PECS = Planning, Environment & Community Services									
565	Tender for the supply of Tyres and associated repair services	The report will outline the tender process carried out by Procurement to provide replacement tyres and repair services for the Fleet of Vehicles operated by the Council. Following the evaluation of tender submissions the report will recommend a contract award for a 3 year period with a possible 2 year extension.	N/A		Cllr Keith Burrows and Cllr Scott Seaman-Digby	PECS - David Fisher	Corporate Teams		NEW
568	Award of contract: Housing Support Services for People with Complex Needs	A set of specialist accommodation-based and floating services to support people with low-level complex needs has been competitively tendered. This report recommends to Cabinet award of contract to the successful provider. The new service will enable people to live independently within the community rather than in institutional settings that are unnecessary and expensive. The new service will be delivered with efficiency savings for the council and the new contract is focused on an improved set of outcomes for improving the lives of service users.	All		Cllr Philip Corthorne and Cllr Scott Seaman-Digby	ASCH&H - Paul Feven	Corporate Teams		NEW
549	Borough Transport Strategy - Local Implementation Plan 2011-14 (Policy Framework)	Following the expected decision in December 2010 by Cabinet to consult on this 4 year transport strategy for the Borough, the Cabinet will be requested to formally endorse it. As a policy framework document Cabinet may recommend it to full Council for formal adoption. It will detail the fund allocation approved by Transport for London for the Borough up to 2014.	All	12 May 2011	Cllr Keith Burrows	PECS - Jales Tippell	Various stakeholders and the relevant Policy Overview Committee		
SI	Reports from Policy Overview Committees	Major Policy Review recommendations for consideration by the Cabinet as and when completed.	TBC		as appropriate	DCEO - Democratic Services			

Ref	Report Title	Advance information	Ward(s)	Report to Full Council	Cabinet Member(s) Responsible	Officer Contact	Consultation	Background Documents	NEW ITEM
<small>ASCH&H = Adult Social Care, Health & Housing; DCEO = Deputy Chief Executive's Office; E&CS = Education & Children's Services; F&BS = Finance & Business Services; PECS = Planning, Environment & Community Services</small>									
SI	Monthly Council Budget - monitoring report	The Cabinet receives a monthly report setting out in detail the council's revenue and capital position.	All		Cllr Jonathan Bianco	F&BS - Paul Whaymand			
CABINET MEMBER DECISIONS - APRIL 2011									
SI	Standard Items taken each month by the Cabinet Member	Cabinet Members make a number of decisions each month on standard items - details of these standard items are listed at the end of the Forward Plan.	Various		All	DCEO - Democratic Services	Various	Various	
CABINET - 26 May 2011 (date tbc)									
SI	Reports from Policy Overview Committees	Major Policy Review recommendations for consideration by the Cabinet as and when completed.	TBC		as appropriate	DCEO - Democratic Services			
SI	Monthly Council Budget - monitoring report	The Cabinet receives a monthly report setting out in detail the council's revenue and capital position.	All		Cllr Jonathan Bianco	F&BS - Paul Whaymand			
CABINET MEMBER DECISIONS - MAY 2011									
SI	Standard Items taken each month by the Cabinet Member	Cabinet Members make a number of decisions each month on standard items - details of these standard items are listed at the end of the Forward Plan.	Various		All	DCEO - Democratic Services	Various	Various	
CABINET - 23 June 2011 (date tbc)									

Ref	Report Title	Advance information	Ward(s)	Report to Full Council	Cabinet Member(s) Responsible	Officer Contact	Consultation	Background Documents	NEW ITEM
<small>ASCH&H = Adult Social Care, Health & Housing; DCEO = Deputy Chief Executive's Office; E&CS = Education & Children's Services; F&BS = Finance & Business Services; PECS = Planning, Environment & Community Services</small>									
552	High Speed 2 - Consultation Response	The Cabinet will give a comprehensive and robust response on behalf of the Borough and its residents to the anticipated Government consultation on proposals for a High Speed Rail route potentially impacting upon the Borough.	West Ruislip, Manor, Ickenham, South Ruislip, Harefield and beyond		Cllr Keith Burrows	PECS - Jales Tippell	Residents, Residents Associations and relevant organisations within the Borough, other local authorities.	Department for Transport Consultation Documents	Updated date
SI	Quarterly Planning Obligations Monitoring report - Quarter 3	Regular monitoring report with information about spending on section 106 (developer contribution) monies.	All		Cllr Keith Burrows	PECS - Jales Tippell / Vanessa Scott		Previous Cabinet Reports	
SI	Voluntary Sector Leases Report	Regular report on discounted leases to voluntary sector organisations that benefit residents and the wider community	All		Cllr Jonathan Bianco	PECS - Gregory Morrison			
SI	Reports from Policy Overview Committees	Major Policy Review recommendations for consideration by the Cabinet as and when completed.	TBC		as appropriate	DCEO - Democratic Services			
SI	Monthly Council Budget - monitoring report	The Cabinet receives a monthly report setting out in detail the council's revenue and capital position.	All		Cllr Jonathan Bianco	F&BS - Paul Whaymand			
CABINET MEMBER DECISIONS - JUNE 2011									
SI	Standard Items taken each month by the Cabinet Member	Cabinet Members make a number of decisions each month on standard items - details of these standard items are listed at the end of the Forward Plan.	Various		All	DCEO - Democratic Services	Various	Various	

CABINET - 28 July 2011 (date tbc)

Ref	Report Title	Advance information	Ward(s)	Report to Full Council	Cabinet Member(s) Responsible	Officer Contact	Consultation	Background Documents	NEW ITEM
ASCH&H = Adult Social Care, Health & Housing; DCEO = Deputy Chief Executive's Office; E&CS = Education & Children's Services; F&BS = Finance & Business Services; PECS = Planning, Environment & Community Services									
563	Local Development Framework - Core Strategy and Development Management Documents (Policy Framework)	Following consultation, Cabinet will be asked to recommend to Council the adoption of an amended Core Strategy.	All	08/09/2011 (tbc)	Cllr Keith Burrows	PECS - Jales Tippell	Public consultation has been carried out during the preparation of the documents.	Draft Core Strategy and Development Management documents.	NEW
564	West London Waste Plan: Proposed Sites and Policies	Following consultation by the six West London boroughs - Hillingdon, Brent, Ealing, Harrow, Hounslow and Richmond-upon-Thames, Cabinet will be asked to approve an up-to-date policy framework to assess planning applications for waste management facilities - also forming part of the Local Development Framework for each Borough.	All		Cllr Keith Burrows	PECS - Jales Tippell			NEW
SI	Reports from Policy Overview Committees	Major Policy Review recommendations for consideration by the Cabinet as and when completed.	TBC		as appropriate	DCEO - Democratic Services			
SI	Monthly Council Budget - monitoring report	The Cabinet receives a monthly report setting out in detail the council's revenue and capital position.	All		Cllr Jonathan Bianco	F&BS - Paul Whaymand			

This page is intentionally left blank

RESIDENTS' AND ENVIRONMENTAL SERVICES POLICY OVERVIEW COMMITTEE 2010-11

Contact Officer: Natasha Dogra

Telephone: 01895 277488

REASON FOR ITEM

All Committee meetings will begin at 6.00 p.m. That the Committee consider revisions to the scheduling of existing meetings based upon review topics during 2010/11 as set out below:

WORK PROGRAMME

8 June 2010	Work Programme – review the annual work programme
	Review Discuss – to discuss potential review topics for 2010/11.
	Cabinet Forward Plan – review forthcoming decisions and if appropriate, comment to the decision-maker.
27 July 2010	Work Programme – review the annual work programme
	Review 1 – to consider various scoping reports and decide on one or two review topics for 2010/11.
	LDF - Core Strategy: Consultation on Policy Framework document.
	Cabinet Forward Plan – review forthcoming decisions and if appropriate, comment to the decision-maker.
22 September 2010	Work Programme – review the annual work programme
	Review 1 – Witness Session: Importation and Distribution
	Review 2 – Consideration of Scoping Report
	Cabinet Forward Plan – review forthcoming decisions and if appropriate, comment to the decision-maker.

7 October 2010	Work Programme – review the annual work programme
	Review 1 – Witness Session: Social
	Cabinet Forward Plan – review forthcoming decisions and if appropriate, comment to the decision-maker.
16 November 2010	Work Programme – review the annual work programme
	Statement of Licensing Policy - consultation update
	Annual Safety at Sports Ground Report – Committee update.
	Review 1 – witness session: Health
	Cabinet Forward Plan – review forthcoming decisions and if appropriate, comment to the decision-maker.
07 December 2010	Work Programme – review the annual work programme
	Review 1 – witness session: crime and anti-social behaviour
	Cabinet Forward Plan – review forthcoming decisions and if appropriate, comment to the decision-maker.
18 January 2011	Work Programme – review the annual work programme
	Review 1 – to consider conclusions and recommendations
	Review 2 – to agree the final report
	Budget Reports for consideration
	Cabinet Forward Plan – review forthcoming decisions and if appropriate, comment to the decision-maker.
15 February 2011	Work Programme – review the annual work programme
	Review 1 – to consider the final report
	Review 1 – National witness session (tbc)
8 March 2011	Cabinet Forward Plan – review forthcoming decisions and if appropriate, comment to the decision-maker.
8 March 2011	Work Programme – review the annual work programme
	Review 1 – to agree the final report

	Cabinet Forward Plan – review forthcoming decisions and if appropriate, comment to the decision-maker.
12 April 2011	Work Programme – review the annual work programme
	Cabinet Forward Plan – review forthcoming decisions and if appropriate, comment to the decision-maker.

This page is intentionally left blank